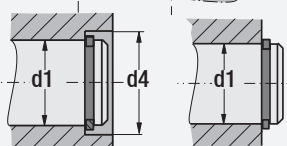
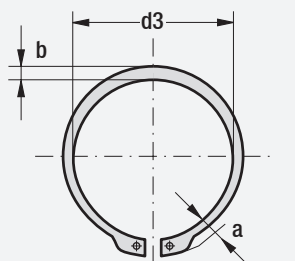
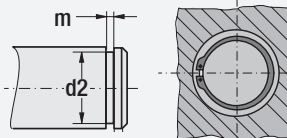




External Circlip Code: **DIN471**



Mounting



Code: **DIN471**

d1	S	a	b	d3	d4	m
16	1.0	3.5	2.2	14.7	24.4	1.1
20	1.2	4.0	2.6	18.5	29.0	1.3
21		4.1	2.7	19.5	30.2	
22		4.2	2.8	20.5	31.4	
24		4.4	3.0	22.2	33.8	
25		4.4	3.0	23.2	34.8	
26	1.5	4.5	3.1	24.2	36.1	1.6
28		4.7	3.2	25.9	38.4	
29		4.8	3.4	26.9	39.6	
30	1.75	5.0	3.5	27.9	41.0	1.85
34		5.4	3.8	31.5	45.8	
37		5.7	4.1	34.2	49.4	
39	2.0	5.8	4.2	35.2	50.6	2.15
45		6.7	4.7	41.5	59.4	
50	2.0	6.9	5.1	45.8	64.8	2.15
54		7.1	5.3	49.8	70.0	



Order : **DIN471. d1 x S**

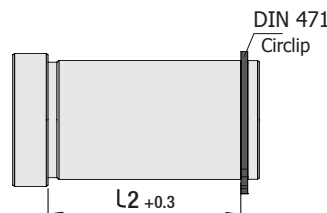
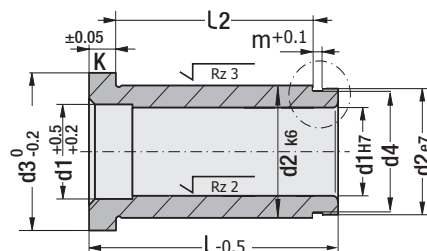
Kod: **G77**

d1	l	d2	d3	K	L2	m	d4	d5	Circlip
12	26	16	19	4	16	1.2	15.2	24.3	DIN 471 Ø 16
	36								
	46								
	56								
	66								
14	26	20	25	6	16	1.5	19	29.1	DIN 471 Ø 20
	36								
	46								
	56								
	66								
16	26	24	28	6	16	1.4	22.9	34	DIN 471 Ø 24
	36								
	46								
	56								
	66								
20	26	28	32	6	16	1.8	26.6	38.5	DIN 471 Ø 28
	36								
	46								
	56								
	66								
25	26	34	38	8	14	1.8	32.3	46.1	DIN 471 Ø 34
	36								
	46								
	56								
	66								
30	36	39	43	10	21	2.0	37	52.1	DIN 471 Ø 39
	46								
	56								
	66								
	76								
40	46	54	58	10	28	2.25	51	71	DIN 471 Ø 54
	56								
	66								
	76								
	86								
96									
106									
116									
126									
136									
146									

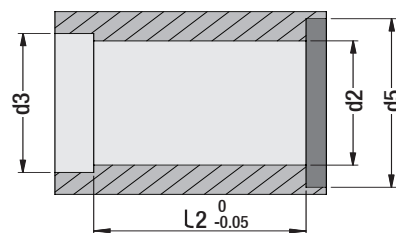


Guide Bush - Headed Code: **G77**
(with circlip slotted)

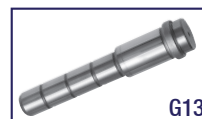
For general usage in injection mould guide systems - it prevents the bush protrude in free rotating plates (**H6** centre fixing).



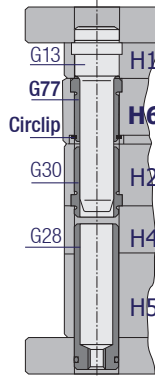
Mounting Dimensions



Compatible Pillars



Mounting Example



Order: **G77. d1 x l**

Material: 1.7131 - Hardness: 58 - 62 HRC